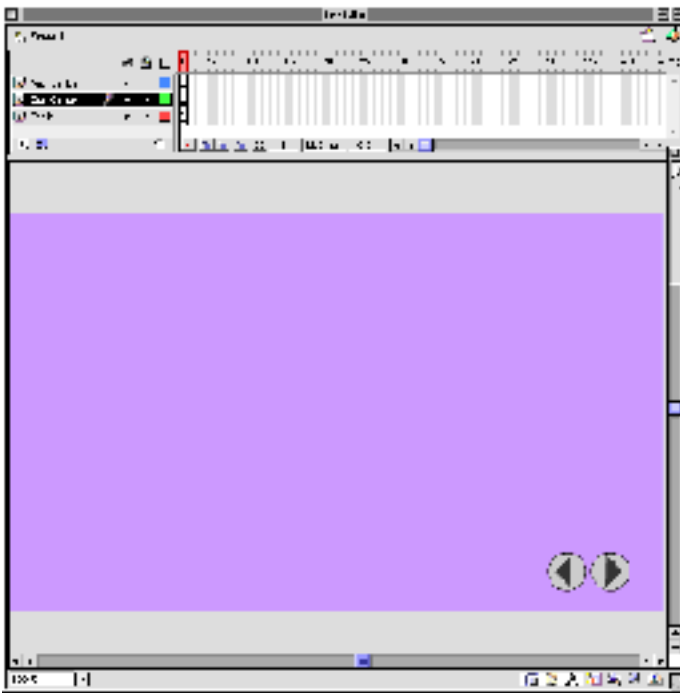


# Flash Slide Show

If you are starting a new project make a copy of the template.fla

Make your copy a single word name ending in .fla

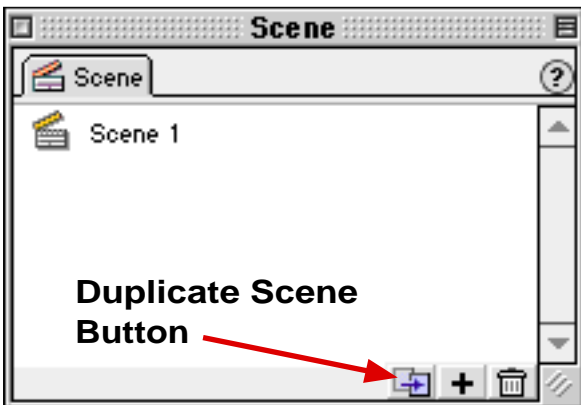
Open your file. The instructions for here guide you through making a new scene, which you should do if you have made a new file or are adding a scene to an existing one.



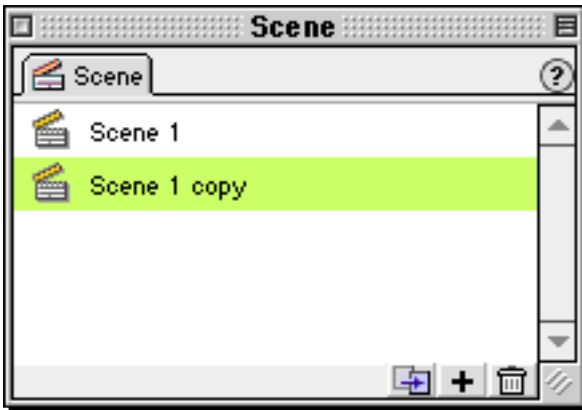
## Creating a Scene

If the scene panel is not open, open it.

**Windows** menu-> **Panels**->**Scene**.



Click on Scene 1 and then click on the duplicate Scene button.



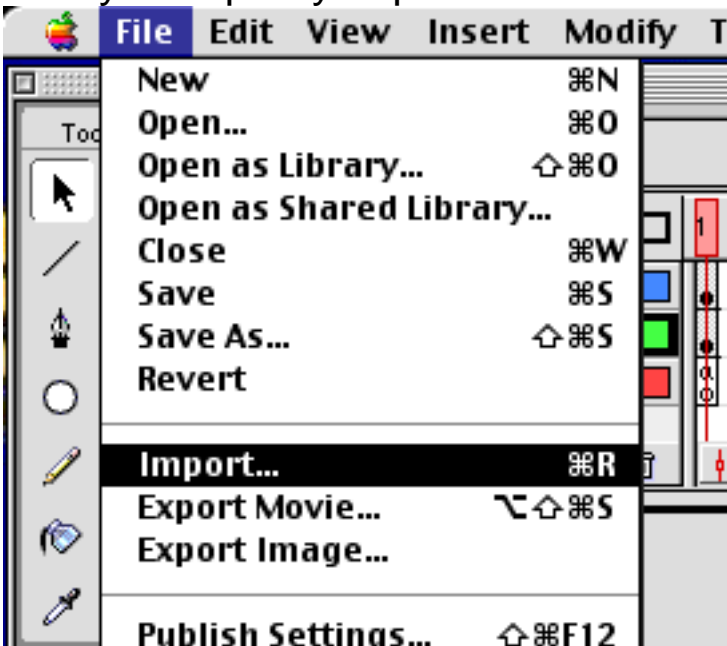
Double click on the words 'Scene 1 copy' and type in a new name.



Save

# Adding your Pictures

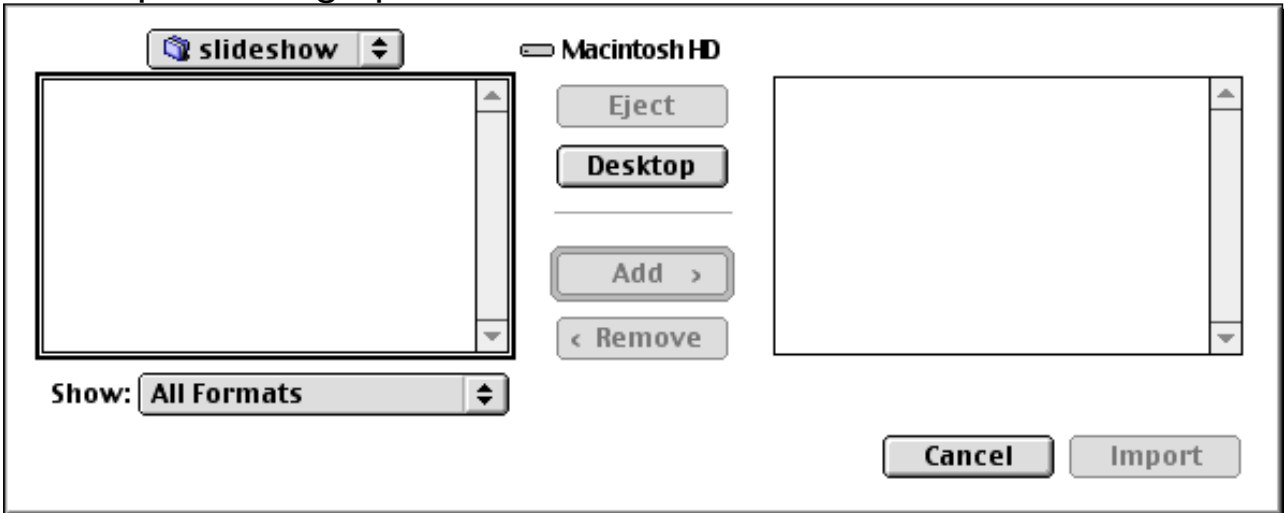
First you import you pictures and then place them on your scene



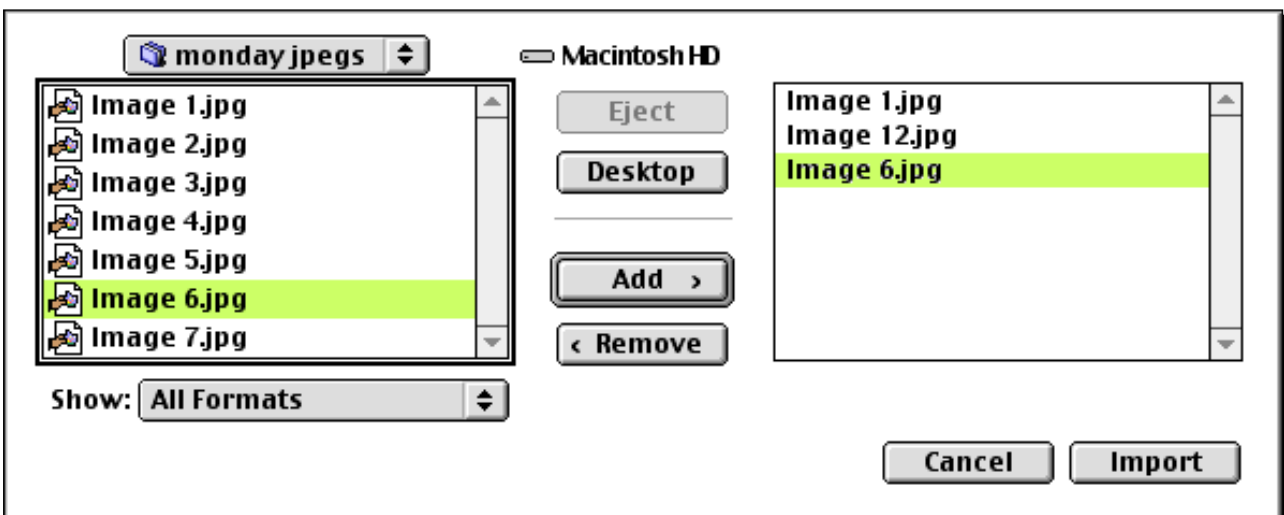
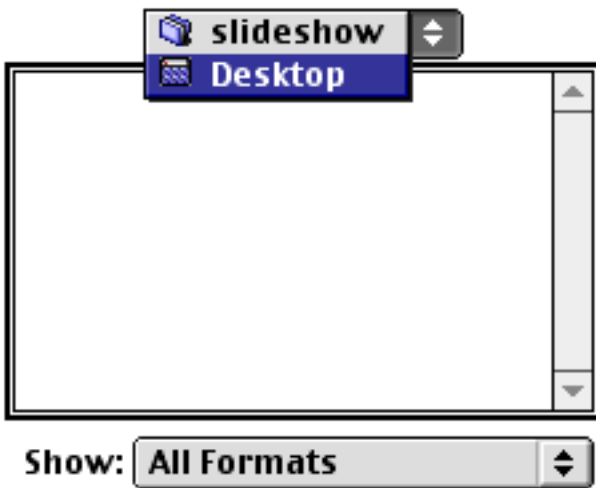
menu.

Choose **Import** for the **File**

The Import dialog opens:

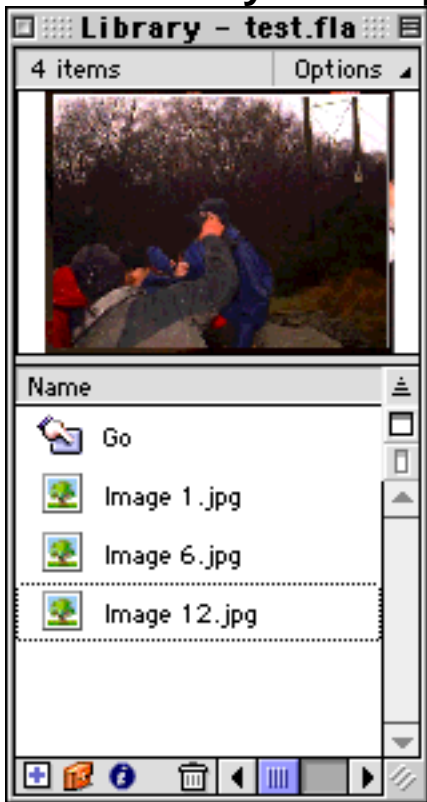


Navigate to the file you want on the left hand side of the dialogue.



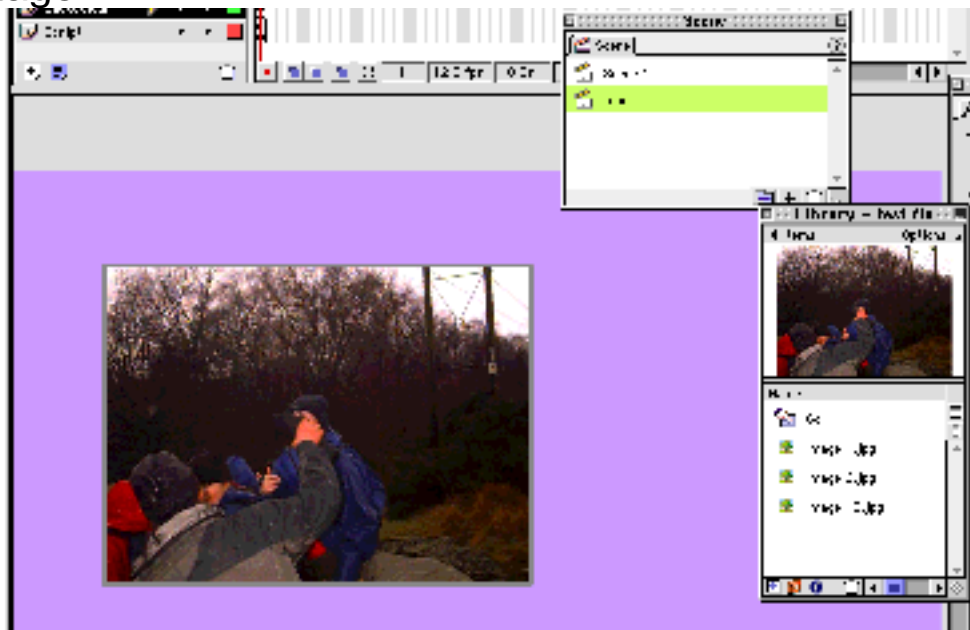
Click on the images in the left box you want and then use the **Add** button to put them into the right hand list. When you have got all the ones you want click **Import**.

The images will be imported, and one will be placed on the stage.  
All the images will be place in the **Library**.  
If the **Library** is not open, open it from the **Windows** Menu.



Save

If you want you can delete the one on the stage and it will stay in the library. You can then drag the images you want on to the stage.



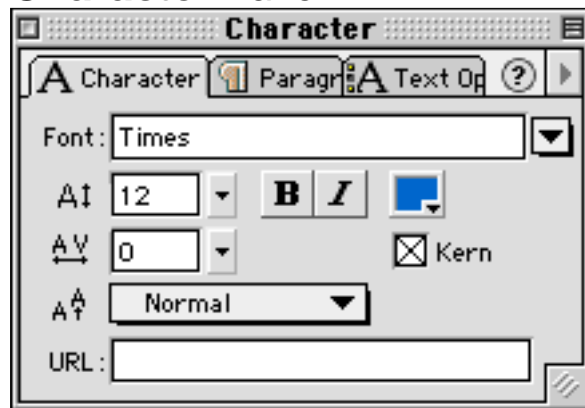
# Adding Text

If you cannot see the **Tools** window, open it from the **Windows** menu.

Choose the Text tool **A**

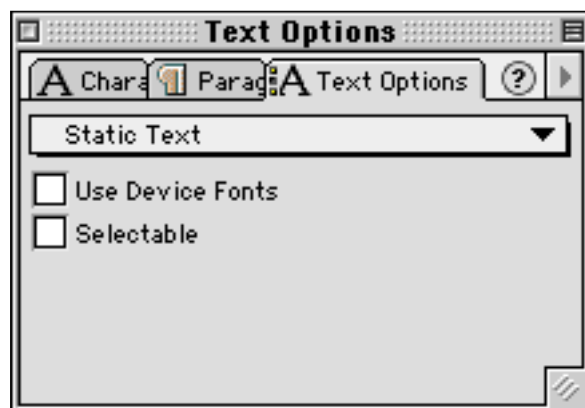
Drag a Text Box for a title for your scene. Type in the name of the title.

Adjust the size and font of your title text with the **Character** Panel.



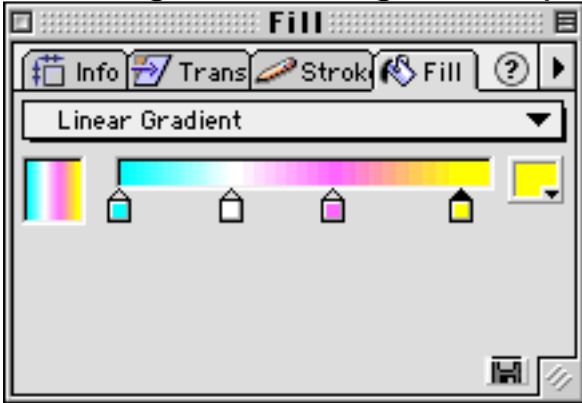
Add more text boxes for your information text and labels for your pictures.

Make sure all your text boxes are set to Static Text from the **Text Options** Panel.

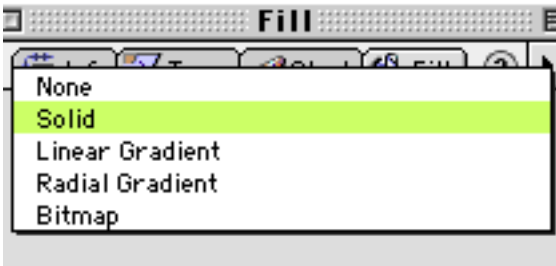


# The Background

You can change the colour of the back ground on your scene, by selecting it and using the Fill panel



You can choose a solid colour or a gradient:

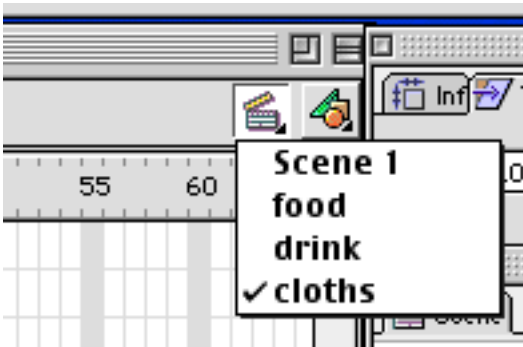


Make sure that the text on you scene can be read easily. You might need to change the colour of the text too.

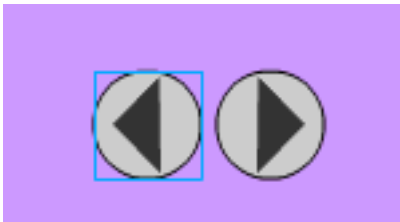
# Finishing up

After all the scenes are complete you can drag the screens up and down in the **scene panel** to put them in the order you want.

Go to the first scene, use the popup button at the top right of the window:



Select the left hand button on the stage.



and delete it:



Go to the last scene and delete the right hand button of that scene.

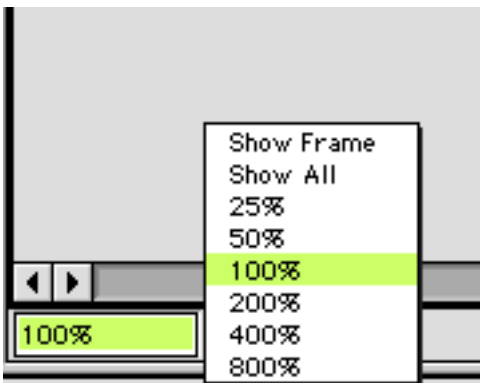


**Save**

# General Points

All the panels can be opened from the Panels sub menus from the Windows menu.

You can change the size you see the stage from the popup at the bottom left of the main window.



Sometimes you have to try opening the Library a few times before it will work.

Test the move at any time with Command(apple) Enter or  
**Control** menu -> **Test Movie**.